

# A47/A11 Thickthorn Junction

**Scheme Number: TR010037**

## **Volume 2** **2.8 Drainage and Surface Water Plans**

APFP Regulations 5(2)(o) and 5(4)

Planning Act 2008

Infrastructure Planning (Applications: Prescribed  
Forms and Procedure) Regulations 2009

December 2021

Infrastructure Planning

Planning Act 2008

**The Infrastructure Planning  
(Applications: Prescribed Forms and  
Procedure) Regulations 2009**

The A47/A11 Thickthorn Junction  
Development Consent Order 202[x]

---

**DRAINAGE AND SURFACE WATER PLANS**

---

<b>Regulation Number:</b>	5(2)(o) and 5(4)
<b>Planning Inspectorate Scheme Reference</b>	TR010037
<b>Application Document Reference</b>	TR010037/APP/2.8
<b>Author:</b>	A47/A11 Thickthorn Junction Project Team, Highways England

<b>Version</b>	<b>Date</b>	<b>Status of Version</b>
Rev. 0	March 2021	Application Issue
Rev 1	December 2021	Deadline 4

## **CONTENTS**

<b>1.</b>	<b>Introduction .....</b>	<b>1</b>
<b>2.</b>	<b>Schedule of Plans in this Application Document.....</b>	<b>2</b>

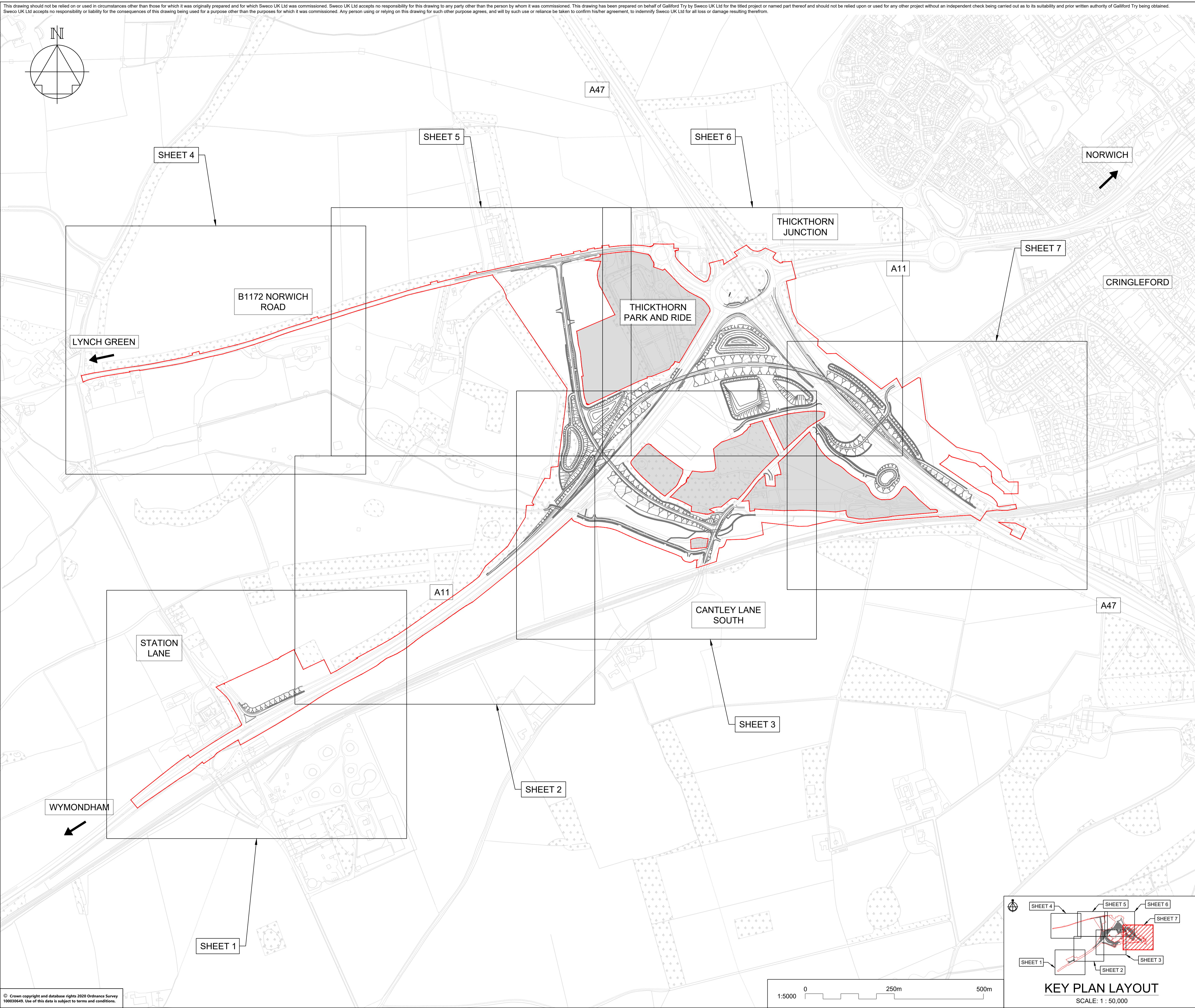
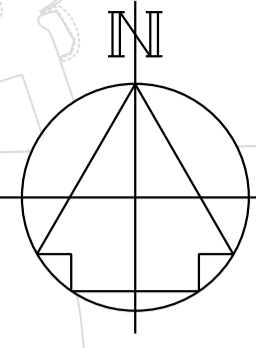
## 1. INTRODUCTION

- 1.1.1. The Drainage and Surface Water Plans (the “Plans”) relate to an application made by Highways England (the “Applicant”) to the Secretary of State of Transport, via the Planning Inspectorate (the “Inspectorate”) under Section 37 of the Planning Act 2008 (PA 2008) for a Development Consent Order (DCO). If made, the DCO would grant consent for the A47/A11 Thickthorn Junction (the “Scheme”). A detailed description of the Scheme can be found in Chapter 2: The Proposed Scheme of the Environmental Statement (ES)(**TR010037/APP/6.1**)
- 1.1.2. The Plans comprise part of the suite of Application documentation and are included in the application for a DCO in compliance with Regulations 5(2)(0) and 5(4) of the Infrastructure Planning (Applications: Prescribed Forms and Procedure) Regulations 2009 (the “2009 Regulations”), which require:
- 5(2)(o) “any other plans, drawings and sections necessary to describe the proposals for which development consent is sought, showing details of design, external appearance, and the preferred layout of buildings or structures, drainage, surface water management, means of vehicular and pedestrian access, any car parking to be provided, and means of landscaping;”
- 5(4) “where a plan comprises three or more separate sheets a key plan must be provided showing the relationship between the different sheets”.*
- 1.1.3. As the Plans are part of the application documentation, they should be read alongside and are informed by the other application documentation. In particular, the Plans should be read alongside Schedule 1 of the draft DCO (**TR010037/APP/3.1**), the Works Plans (**TR010037/APP/2.4**) and the Engineering Drawings and Sections (**TR010037/APP/2.7**).

## 2. SCHEDULE OF PLANS IN THIS APPLICATION DOCUMENT

Document Title	DCO Document Number	Drawing Number	Rev
Drainage and Surface Water Plans, Regulation 5(4) – Key Plan	TR010037/APP/2.8(A)	HE551492-GTY-LSI-000-DR-CH-37000	P05
Drainage and Surface Water Plans, Regulation 5(2)(o), Sheet 1 of 7	TR010037/APP/2.8(B)	HE551492-GTY-LSI-000-DR-CH-37001	P05
Drainage and Surface Water Plans, Regulation 5(2)(o), Sheet 2 of 7	TR010037/APP/2.8(C)	HE551492-GTY-LSI-000-DR-CH-37002	P05
Drainage and Surface Water Plans, Regulation 5(2)(o), Sheet 3 of 7	TR010037/APP/2.8(D)	HE551492-GTY-LSI-000-DR-CH-37003	P05
Drainage and Surface Water Plans, Regulation 5(2)(o), Sheet 4 of 7	TR010037/APP/2.8(E)	HE551492-GTY-LSI-000-DR-CH-37004	P05
Drainage and Surface Water Plans, Regulation 5(2)(o), Sheet 5 of 7	TR010037/APP/2.8(F)	HE551492-GTY-LSI-000-DR-CH-37005	P05
Drainage and Surface Water Plans, Regulation 5(2)(o), Sheet 6 of 7	TR010037/APP/2.8(G)	HE551492-GTY-LSI-000-DR-CH-37006	P05
Drainage and Surface Water Plans, Regulation 5(2)(o), Sheet 7 of 7	TR010037/APP/2.8(H)	HE551492-GTY-LSI-000-DR-CH-37007	P05

This drawing should not be relied on or used in circumstances other than those for which it was originally prepared and for which Sweco UK Ltd was commissioned. Sweco UK Ltd accepts no responsibility for this drawing to any party other than the person by whom it was commissioned. This drawing has been prepared on behalf of Galliford Try by Sweco UK Ltd for the titled project or named part thereof and should not be relied upon or used for any other project without an independent check being carried out as to its suitability and prior written authority of Galliford Try being obtained. Sweco UK Ltd accepts no responsibility or liability for the consequences of this drawing being used for a purpose other than the purposes for which it was commissioned. Any person using or relying on this drawing for such other purpose agrees, and will by such use or reliance be taken to confirm his/her agreement, to indemnify Sweco UK Ltd for all loss or damage resulting therefrom.



**NOTES**  
 Purpose of use  
**FOR DCO SUBMISSION**

Development Consent Order Number / Document  
**TR010037/APP/2.8(A)**

- ALL DIMENSIONS ARE IN METRES UNLESS STATED OTHERWISE.
- THESE PLANS SHOULD BE READ IN CONJUNCTION WITH OTHER PLANS AND DOCUMENTS IN THE DEVELOPMENT CONSENT ORDER, IN PARTICULAR THE BOOK OF REFERENCE.

**KEY TO SYMBOLS**

- ORDER LIMITS
- AREA NOT INCLUDED IN ORDER LIMITS
- SCHEME DESIGN

REV	DATE	REVISION NOTE	ORG	CHKD	APPD
P01	10/11/20	FOR INFORMATION	AKno	JHar	JHar
P02	10/12/20	DESIGN UPDATE	DPil	JHar	JHar
P03	15/03/21	DCO SUBMISSION	ACus	JHar	BWil
P04	30/03/21	DCO SUBMISSION	AKno	JHar	BWil
C01	30/03/21	DCO SUBMISSION	AKno	JHar	BWil
P05	06/12/21	DEADLINE 4	OH	JHar	JHar

DESIGNER

CONTRACTOR

CLIENT

PROJECT TITLE  
**A47/A11 THICKTHORN JUNCTION**

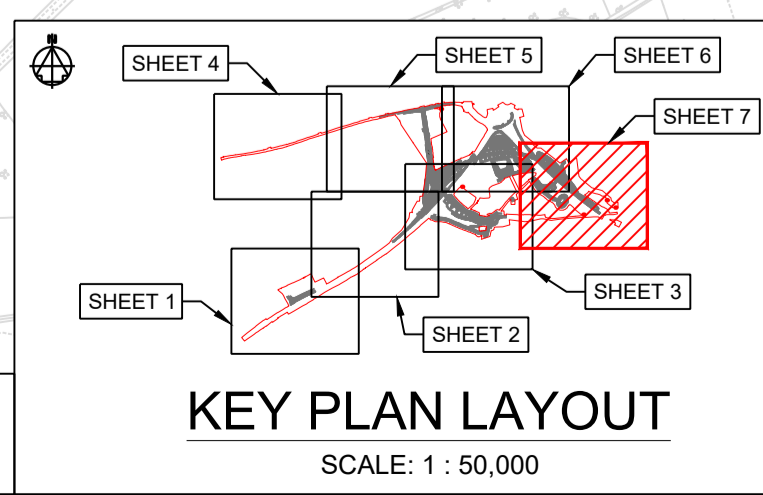
PROJECT STAGE  
**PCF STAGE 4**

DRAWING TITLE  
**DRAINAGE ENGINEERING  
 REGULATIONS 5(4)  
 KEY PLAN**

SUITABILITY  
**SUITABLE FOR STAGE APPROVAL**

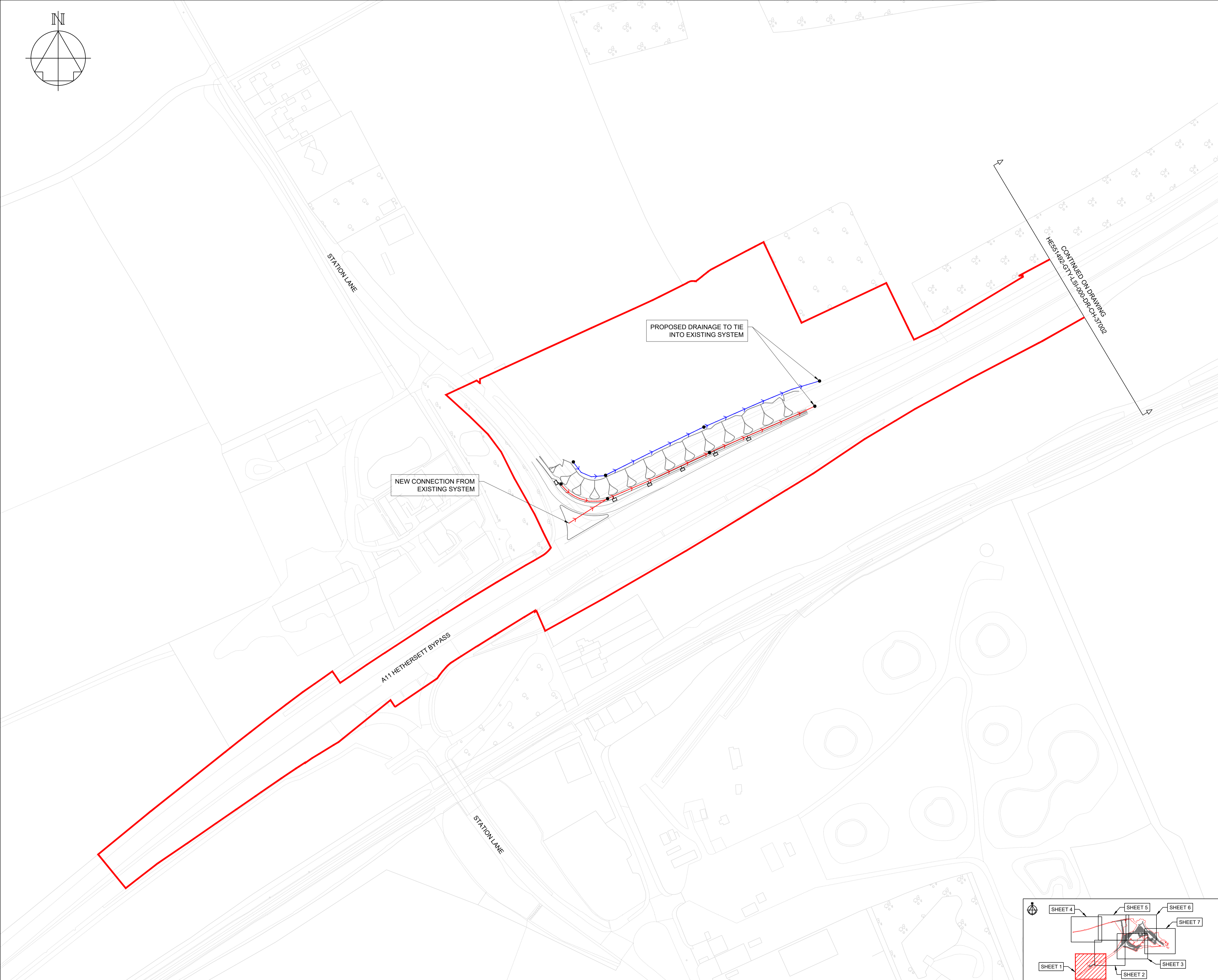
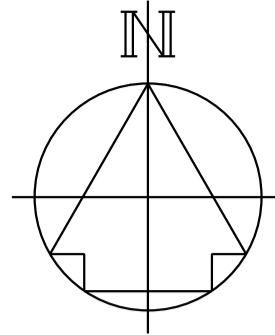
SHEET SIZE	SCALE	STATUS	REVISION
A1	1:5000	S4	P05

DRAWING NUMBER  
**HE551492-GTY-LSI-000-DR-CH-37000**



© Crown copyright and database rights 2020 Ordnance Survey 100030440. Use of this data is subject to terms and conditions.

This drawing should not be relied on or used in circumstances other than those for which it was originally prepared and for which Sweco UK Ltd was commissioned. Sweco UK Ltd accepts no responsibility for this drawing to any party other than the person by whom it was commissioned. This drawing has been prepared on behalf of Galliford Try by Sweco UK Ltd for the titled project and should not be relied upon or used for any other project without an independent check being carried out as to its suitability and prior written authority of Galliford Try being obtained. Sweco UK Ltd accepts no responsibility or liability for the consequences of this drawing being used for a purpose other than the purposes for which it was commissioned. Any person using or relying on this drawing for such other purpose agrees, and will by such use or reliance be taken to confirm his/her agreement, to indemnify Sweco UK Ltd for all loss or damage resulting therefrom.



**NOTES**

Purpose of use  
**FOR DCO SUBMISSION**

Development Consent Order Number / Document  
**TR010037/APP/2.8(B)**

1. ALL DIMENSIONS ARE IN METRES UNLESS STATED OTHERWISE.

**KEY TO SYMBOLS**

- ORDER LIMITS
- AREA NOT INCLUDED IN THE ORDER LIMITS
- SCHEME DESIGN
- FILTER DRAIN
- CARRIER DRAIN
- NARROW FILTER DRAIN / FIN DRAIN
- SURFACE WATER CHANNEL
- COMBINED KERB DRAINAGE
- LINEAR DRAINAGE SYSTEM
- RISING MAIN
- PRE-EARTHWORKS DRAINAGE DITCH
- CATCHPIT / MANHOLE
- GULLY & CONNECTOR
- ⌋ PROPOSED HEADWALL
- BYPASS INTERCEPTORS
- PUMP SHAFT
- CULVERT / PIPE CROSSING
- ATTENUATION STORAGE TANK / AREA

REV	DATE	REVISION NOTE	ORG	CHKD	APPD
P01	10/11/20	FOR INFORMATION	AKno	JHar	JHar
P02	10/12/20	DESIGN UPDATE	DPII	JHar	JHar
P03	15/03/21	DCO SUBMISSION	ACus	JHar	BWII
C01	15/03/21	DCO SUBMISSION	ACus	JHar	BWII
P04	06/12/21	DEADLINE 4	OH	JHar	JHar

DESIGNER  
**SWECO**

CONTRACTOR  
**GallifordTry**

CLIENT  
**highways england**

PROJECT TITLE  
**A47/A11 THICKTHORN JUNCTION**

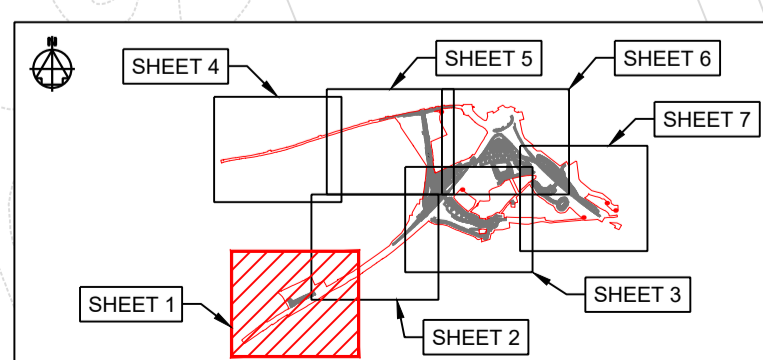
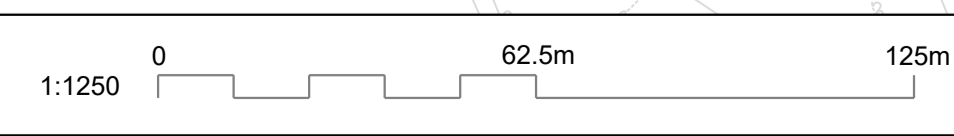
PROJECT STAGE  
**PCF STAGE 4**

DRAWING TITLE  
**DRAINAGE ENGINEERING DRAWINGS REGULATIONS 5(2)(o) AND 5(2)(p) SHEET 1 OF 7**

SUITABILITY  
**WORK IN PROGRESS**

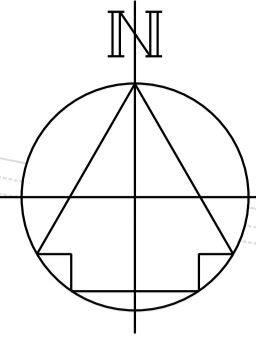
SHEET SIZE	SCALE	STATUS	REVISION
A1	1:1250	S4	P04

DRAWING NUMBER  
**HE51492-GTY-LSI-000-DR-CH-37001**



**KEY PLAN LAYOUT**  
SCALE: 1 : 50,000

This drawing should not be relied on or used in circumstances other than those for which it was originally prepared and for which Sweco UK Ltd was commissioned. Sweco UK Ltd accepts no responsibility for this drawing to any party other than the person by whom it was commissioned. This drawing has been prepared on behalf of Galliford Try by Sweco UK Ltd for the titled project or named part thereof and should not be relied upon or used for any other project without an independent check being carried out as to its suitability and prior written authority of Galliford Try being obtained. Sweco UK Ltd accepts no responsibility or liability for the consequences of this drawing being used for a purpose other than the purposes for which it was commissioned. Any person using or relying on this drawing for such other purpose agrees, and will by such use or reliance be taken to confirm his/her agreement, to indemnify Sweco UK Ltd for all loss or damage resulting therefrom.



**NOTES**

Purpose of use  
**FOR DCO SUBMISSION**

Development Consent Order Number / Document  
**TR010037/APP/2.8(C)**

1. ALL DIMENSIONS ARE IN METRES UNLESS STATED OTHERWISE.

**KEY TO SYMBOLS**

- ORDER LIMITS
- AREA NOT INCLUDED IN THE ORDER LIMITS
- SCHEME DESIGN
- FILTER DRAIN
- CARRIER DRAIN
- NARROW FILTER DRAIN / FIN DRAIN
- SURFACE WATER CHANNEL
- COMBINED KERB DRAINAGE
- LINEAR DRAINAGE SYSTEM
- RISING MAIN
- PRE-EARTHWORKS DRAINAGE DITCH
- CATCHPIT / MANHOLE
- GULLY & CONNECTOR
- ⌋ PROPOSED HEADWALL
- BYPASS INTERCEPTORS
- PUMP SHAFT
- CULVERT / PIPE CROSSING
- ATTENUATION STORAGE TANK / AREA

REV	DATE	REVISION NOTE	ORG	CHKD	APPD
P01	10/11/20	FOR INFORMATION	AKno	JHar	JHar
P02	10/12/20	DESIGN UPDATE	DPII	JHar	JHar
P03	15/03/21	DCO SUBMISSION	ACus	JHar	BWII
C01	15/03/21	DCO SUBMISSION	ACus	JHar	BWII
P04	06/12/21	DEADLINE 4	OH	JHar	JHar

DESIGNER  
**SWECO**

CONTRACTOR  
**GallifordTry**

CLIENT  
**highways  
england**

PROJECT TITLE  
**A47/A11 THICKTHORN JUNCTION**

PROJECT STAGE  
**PCF STAGE 4**

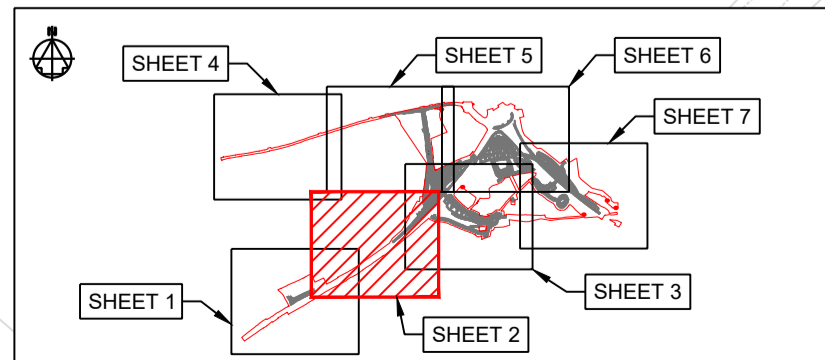
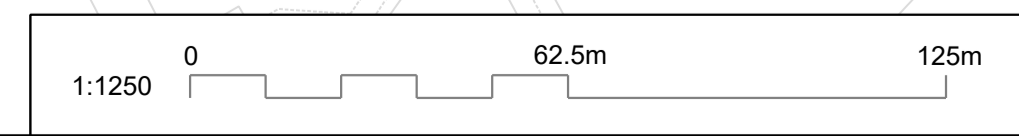
DRAWING TITLE  
**DRAINAGE ENGINEERING  
DRAWINGS  
REGULATIONS 5(2)(o) AND 5(2)(p)  
SHEET 2 OF 7**

SUITABILITY  
**SUITABLE FOR STAGE APPROVAL**

SHEET SIZE	SCALE	STATUS	REVISION
A1	1:1250	S4	P04

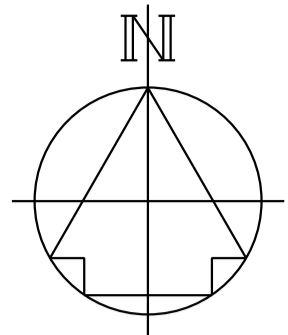
DRAWING NUMBER  
**HE551492-GTY-LSI-000-DR-CH-37002**

© Crown copyright and database rights 2020 Ordnance Survey 100036469. Use of this data is subject to terms and conditions.



**KEY PLAN LAYOUT**  
SCALE: 1 : 50,000

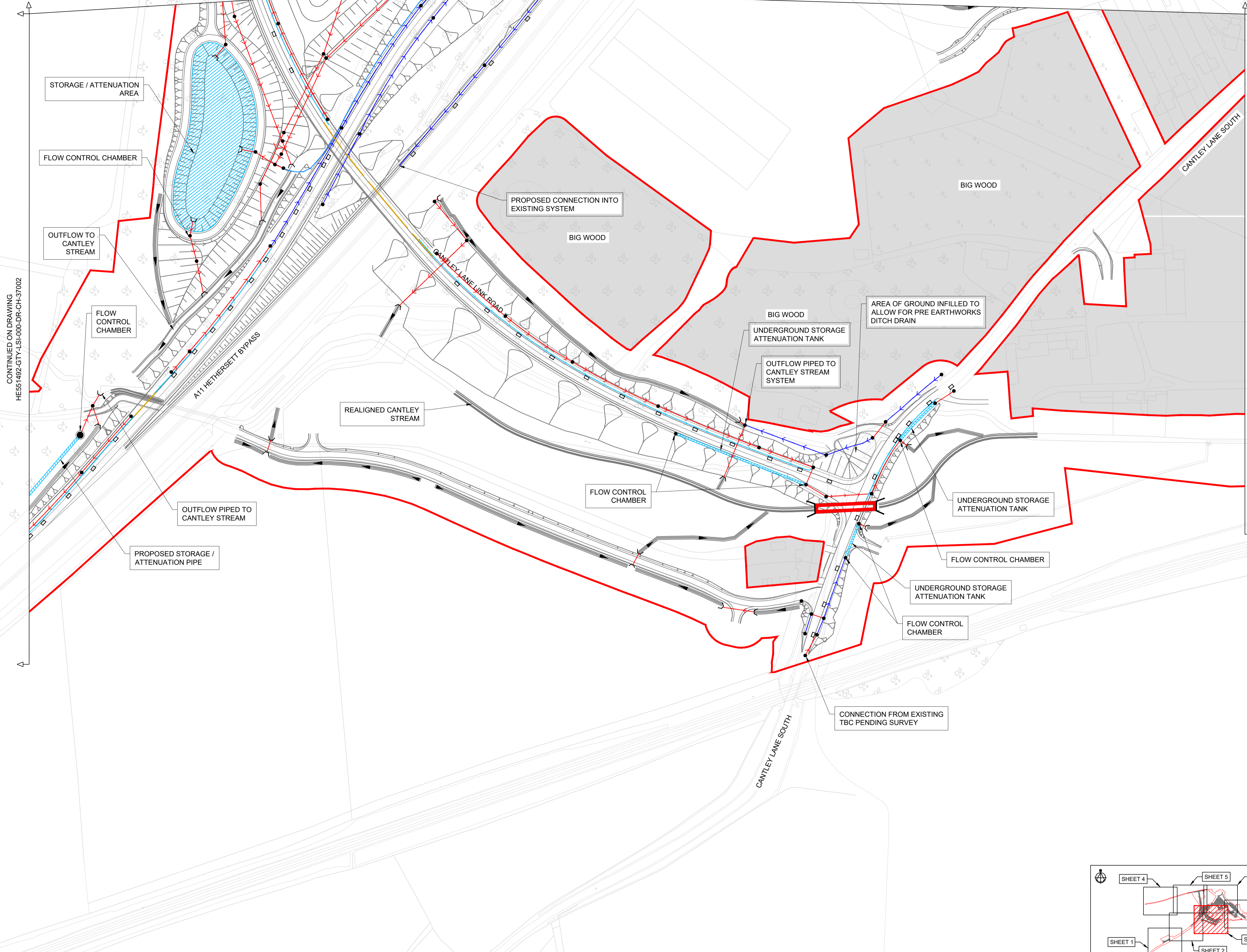




CONTINUED ON DRAWING  
HE551492-GTY-LSI-000-DR-CH-37005

CONTINUED ON DRAWING  
HE551492-GTY-LSI-000-DR-CH-37006

CONTINUED ON DRAWING  
HE551492-GTY-LSI-000-DR-CH-37007



**NOTES**

Purpose of use  
**FOR DCO SUBMISSION**

Development Consent Order Number / Document  
**TR010037/APP/2.8(D)**

1. ALL DIMENSIONS ARE IN METRES UNLESS STATED OTHERWISE.

**KEY TO SYMBOLS**

- ORDER LIMITS
- AREA NOT INCLUDED IN THE ORDER LIMITS
- SCHEME DESIGN
- FILTER DRAIN
- CARRIER DRAIN
- NARROW FILTER DRAIN / FIN DRAIN
- SURFACE WATER CHANNEL
- COMBINED KERB DRAINAGE
- LINEAR DRAINAGE SYSTEM
- RISING MAIN
- PRE-EARTHWORKS DRAINAGE DITCH
- CATCHPIT / MANHOLE
- GULLY & CONNECTOR
- PROPOSED HEADWALL
- BYPASS INTERCEPTORS
- PUMP SHAFT
- CULVERT / PIPE CROSSING
- ATTENUATION STORAGE TANK / AREA

REV	DATE	REVISION NOTE	ORG	CHKD	APPD
P01	10/11/20	FOR INFORMATION	AKno	JHar	JHar
P02	10/12/20	DESIGN UPDATE	DPil	JHar	JHar
P03	15/03/21	DCO SUBMISSION	ACus	JHar	BWil
P04	30/03/21	DCO SUBMISSION	AKno	JHar	BWil
C01	30/03/21	DCO SUBMISSION	AKno	JHar	BWil
P05	06/12/21	DEADLINE 4	OH	JHar	JHar

DESIGNER  
**SWECO**

CONTRACTOR  
**GallifordTry**

CLIENT  
**highways  
england**

PROJECT TITLE  
**A47/A11 THICKTHORN JUNCTION**

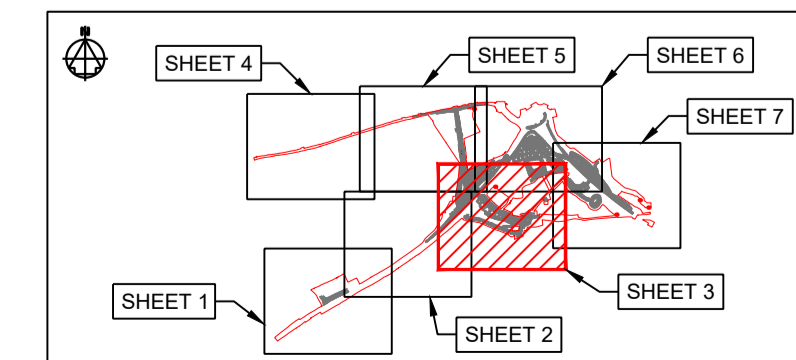
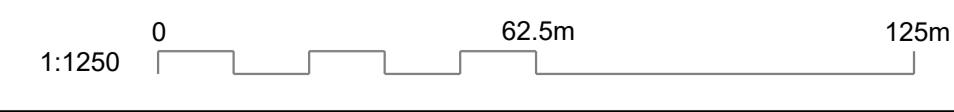
PROJECT STAGE  
**PCF STAGE 4**

DRAWING TITLE  
**DRAINAGE ENGINEERING  
REGULATIONS 5(2)(o) AND 5(2)(p)  
SHEET 3 OF 7**

SUITABILITY  
**WORK IN PROGRESS**

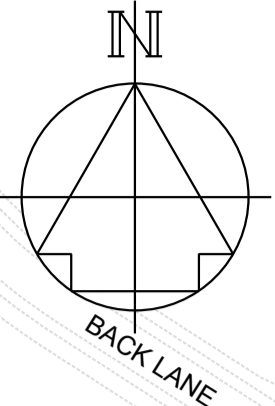
SHEET SIZE	SCALE	STATUS	REVISION
A1	1:1250	S4	P05

DRAWING NUMBER  
**HE551492-GTY-LSI-000-DR-CH-37003**



**KEY PLAN LAYOUT**  
SCALE: 1 : 50,000

This drawing should not be relied on or used in circumstances other than those for which it was originally prepared and for which Sweco UK Ltd was commissioned. Sweco UK Ltd accepts no responsibility for this drawing to any party other than the person by whom it was commissioned. This drawing has been prepared on behalf of Galliford Try by Sweco UK Ltd for the titled project or named part thereof and should not be relied upon or used for any other project without an independent check being carried out as to its suitability and prior written authority of Galliford Try being obtained. Sweco UK Ltd accepts no responsibility or liability for the consequences of this drawing being used for a purpose other than the purposes for which it was commissioned. Any person using or relying on this drawing for such other purpose agrees, and will by such use or reliance be taken to confirm his/her agreement, to indemnify Sweco UK Ltd for all loss or damage resulting therefrom.



DRAWING INCLUDED FOR COMPLETENESS,  
NO DRAINAGE WORK IS PROPOSED HERE

**NOTES**

Purpose of use  
**FOR DCO SUBMISSION**

Development Consent Order Number / Document  
**TR010037/APP/2.8(E)**

- ALL DIMENSIONS ARE IN METRES UNLESS STATED OTHERWISE.

**KEY TO SYMBOLS**

- ORDER LIMITS
- AREA NOT INCLUDED IN THE ORDER LIMITS
- SCHEME DESIGN
- FILTER DRAIN
- CARRIER DRAIN
- NARROW FILTER DRAIN / FIN DRAIN
- SURFACE WATER CHANNEL
- COMBINED KERB DRAINAGE
- LINEAR DRAINAGE SYSTEM
- RISING MAIN
- PRE-EARTHWORKS DRAINAGE DITCH
- CATCHPIT / MANHOLE
- GULLY & CONNECTOR
- PROPOSED HEADWALL
- BYPASS INTERCEPTORS
- PUMP SHAFT
- CULVERT / PIPE CROSSING
- ATTENUATION STORAGE TANK / AREA

REV	DATE	REVISION NOTE	ORG	CHKD	APPD
P01	10/11/20	FOR INFORMATION	AKno	JHar	JHar
P02	10/12/20	DESIGN UPDATE	DPII	JHar	JHar
P03	15/03/21	DCO SUBMISSION	ACus	JHar	BWii
C01	15/03/21	DCO SUBMISSION	ACus	JHar	BWii
P04	06/12/21	DEADLINE 4	OH	JHar	JHar

DESIGNER  
**SWECO**

CONTRACTOR  
**GallifordTry**

CLIENT  
**highways  
england**

PROJECT TITLE  
**A47/A11 THICKTHORN JUNCTION**

PROJECT STAGE  
**PCF STAGE 4**

DRAWING TITLE  
**DRAINAGE ENGINEERING  
DRAWINGS  
REGULATIONS 5(2)(o) AND 5(2)(p)  
SHEET 4 OF 7**

SUITABILITY  
**SUITABLE FOR STAGE APPROVAL**

SHEET SIZE	SCALE	STATUS	REVISION
A1	1:1250	S4	P04

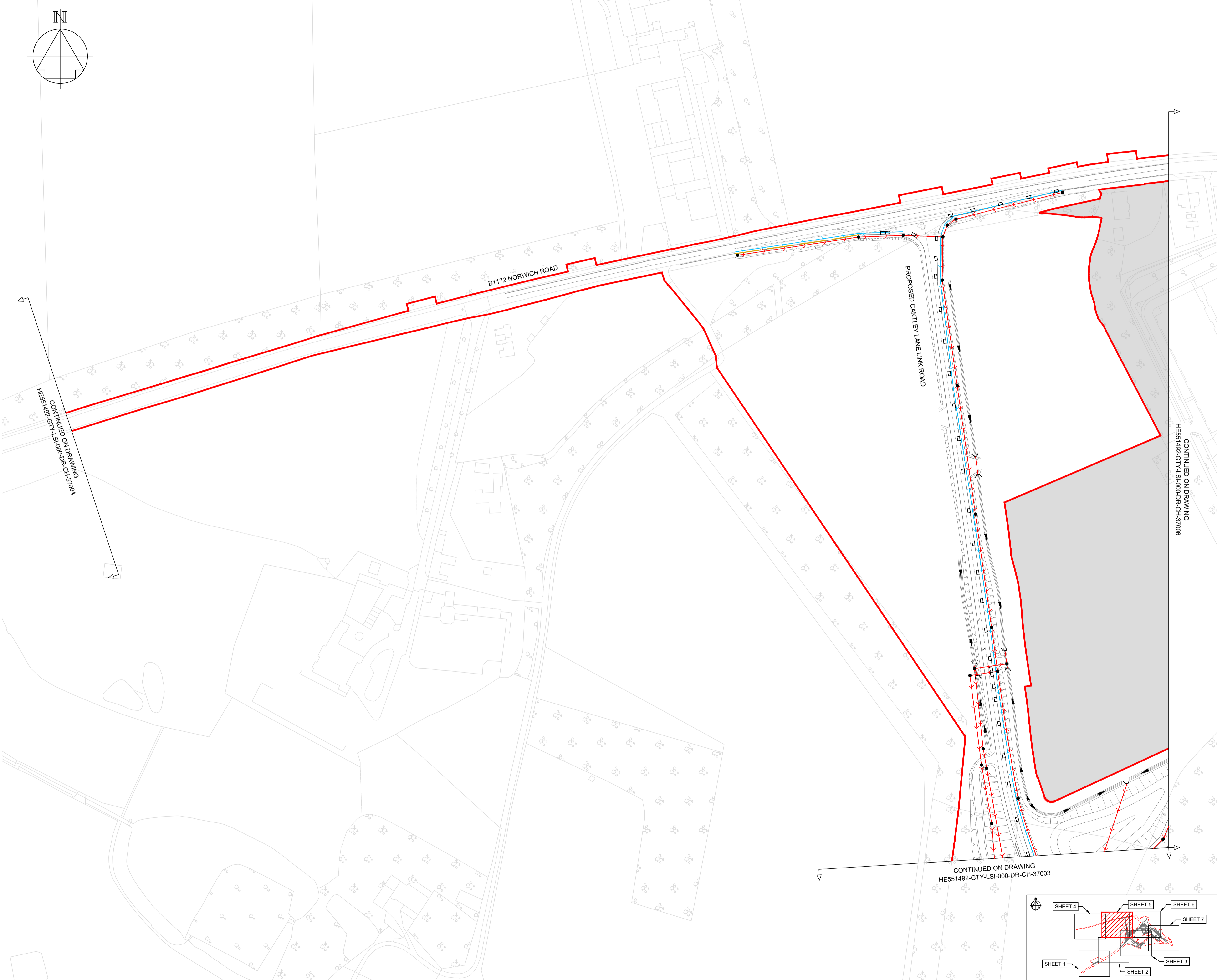
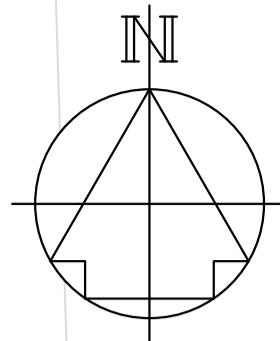
DRAWING NUMBER  
**HE551492-GTY-LSI-000-DR-CH-37004**



HE551492-GTY-LSI-000-DR-CH-37004 CONTINUED ON DRAWING

© Crown copyright and database rights 2020 Ordnance Survey 100030440. Use of this data is subject to terms and conditions.

This drawing should not be relied on or used in circumstances other than those for which it was originally prepared and for which Sweco UK Ltd was commissioned. Sweco UK Ltd accepts no responsibility for this drawing to any party other than the person to whom it was commissioned. This drawing has been prepared on behalf of Galliford Try by Sweco UK Ltd for the titled project or named part thereof and should not be relied upon or used for any other project without an independent check being carried out as to its suitability and prior written authority of Galliford Try being obtained. Sweco UK Ltd accepts no responsibility or liability for the consequences of this drawing being used for a purpose other than the purposes for which it was commissioned. Any person using or relying on this drawing for such other purpose agrees, and will by such use or reliance be taken to confirm his/her agreement, to indemnify Sweco UK Ltd for all loss or damage resulting therefrom.



**NOTES**

Purpose of use  
**FOR DCO SUBMISSION**

Development Consent Order Number / Document  
**TR010037/APP/2.8(F)**

1. ALL DIMENSIONS ARE IN METRES UNLESS STATED OTHERWISE.

**KEY TO SYMBOLS**

- ORDER LIMITS
- AREA NOT INCLUDED IN THE ORDER LIMITS
- SCHEME DESIGN
- > FILTER DRAIN
- > CARRIER DRAIN
- > NARROW FILTER DRAIN / FIN DRAIN
- > SURFACE WATER CHANNEL
- COMBINED KERB DRAINAGE
- LINEAR DRAINAGE SYSTEM
- RISING MAIN
- > PRE-EARTHWORKS DRAINAGE DITCH
- CATCHPIT / MANHOLE
- GULLY & CONNECTOR
- ⌋ PROPOSED HEADWALL
- BYPASS INTERCEPTORS
- PUMP SHAFT
- CULVERT / PIPE CROSSING
- ATTENUATION STORAGE TANK / AREA

REV	DATE	REVISION NOTE	ORG	CHKD	APP'D
P01	10/11/20	FOR INFORMATION	AKno	JHar	JHar
P02	10/12/20	DESIGN UPDATE	DPil	JHar	JHar
P03	15/03/21	DCO SUBMISSION	ACus	JHar	BWll
P04	30/03/21	DCO SUBMISSION	AKno	JHar	BWll
C01	30/03/21	DCO SUBMISSION	AKno	JHar	BWll
P05	06/12/21	DEADLINE 4	OH	JHar	JHar
P06	06/12/21	DEADLINE 4	OH	JHar	JHar

DESIGNER

**SWECO**

CONTRACTOR

**GallifordTry**

CLIENT

**highways  
england**

PROJECT TITLE

**A47/A11 THICKTHORN JUNCTION**

PROJECT STAGE

**PCF STAGE 4**

DRAWING TITLE

**DRAINAGE ENGINEERING  
DRAWINGS  
REGULATIONS 5(2)(o) AND 5(2)(p)  
SHEET 5 OF 7**

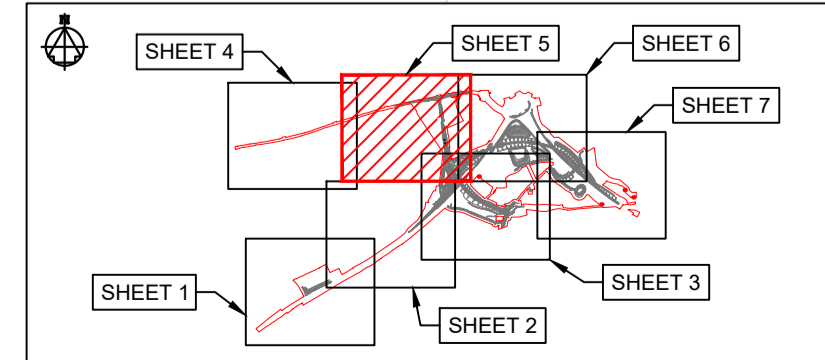
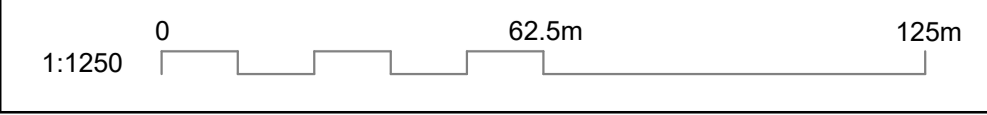
SUITABILITY

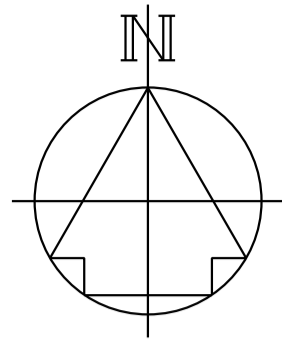
**SUITABLE FOR STAGE APPROVAL**

SHEET SIZE	SCALE	STATUS	REVISION
A1	1:1250	S4	P06

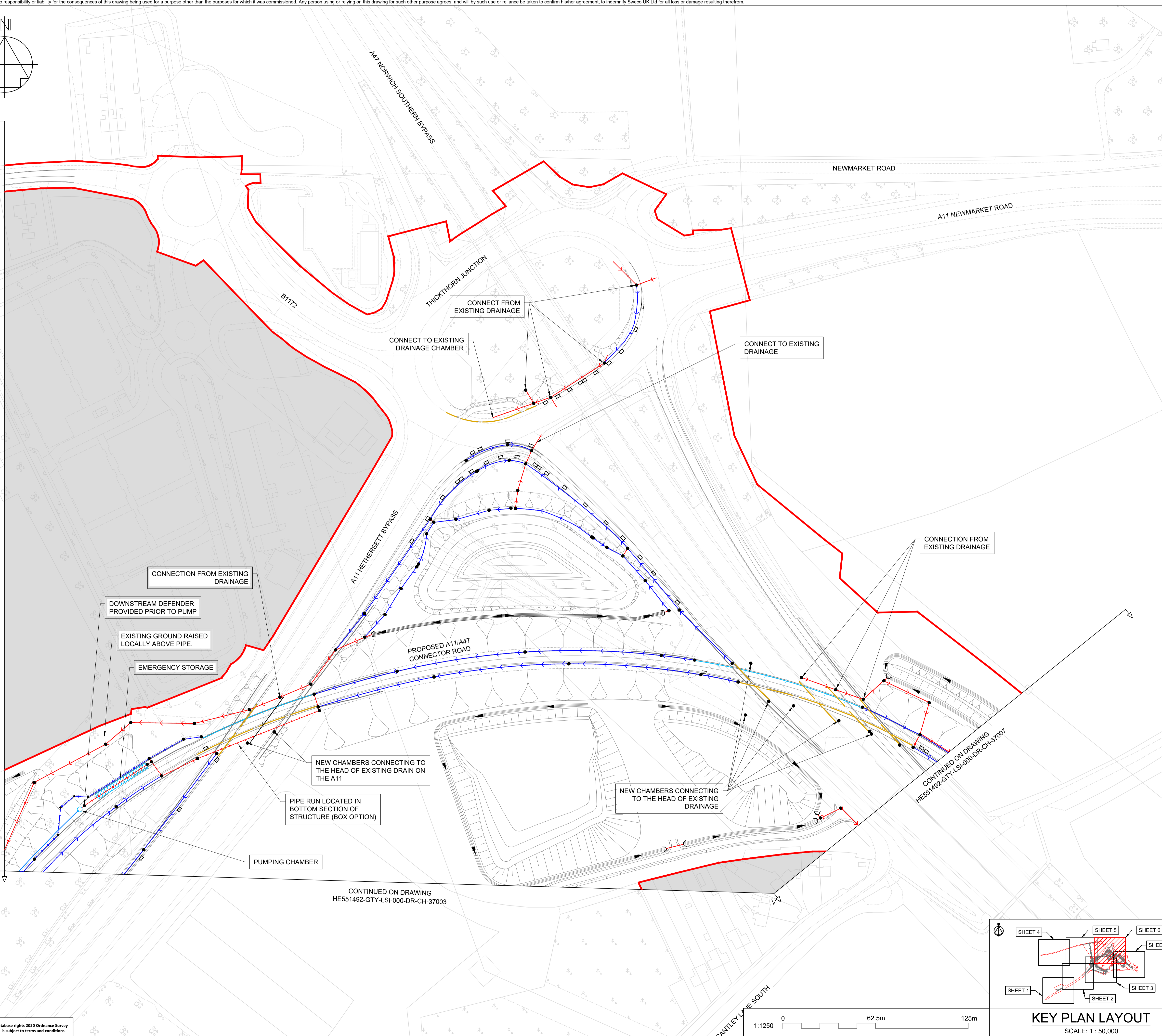
DRAWING NUMBER

**HE551492-GTY-LSI-000-DR-CH-37005**





CONTINUED ON DRAWING  
HE551492-GTY-LSI-000-DR-CH-37005



CONTINUED ON DRAWING  
HE551492-GTY-LSI-000-DR-CH-37003

CONTINUED ON DRAWING  
HE551492-GTY-LSI-000-DR-CH-37007

**NOTES**

Purpose of use  
**FOR DCO SUBMISSION**

Development Consent Order Number / Document  
**TR010037/APP/2.8(G)**

- ALL DIMENSIONS ARE IN METRES UNLESS STATED OTHERWISE.

**KEY TO SYMBOLS**

- ORDER LIMITS
- AREA NOT INCLUDED IN THE ORDER LIMITS
- SCHEME DESIGN
- FILTER DRAIN
- CARRIER DRAIN
- NARROW FILTER DRAIN / FIN DRAIN
- SURFACE WATER CHANNEL
- COMBINED KERB DRAINAGE
- LINEAR DRAINAGE SYSTEM
- RISING MAIN
- PRE-EARTHWORKS DRAINAGE DITCH
- CATCHPIT / MANHOLE
- GULLY & CONNECTOR
- ⌋ PROPOSED HEADWALL
- BYPASS INTERCEPTORS
- PUMP SHAFT
- CULVERT / PIPE CROSSING
- ATTENUATION STORAGE TANK / AREA

REV	DATE	REVISION NOTE	ORG	CHKD	APPD
P01	10/11/20	FOR INFORMATION	AKno	JHar	JHar
P02	10/12/20	DESIGN UPDATE	DPil	JHar	JHar
P03	15/03/21	DCO SUBMISSION	ACus	JHar	BWil
P04	30/03/21	DCO SUBMISSION	AKno	JHar	BWil
C01	30/03/21	DCO SUBMISSION	AKno	JHar	BWil
P05	06/12/21	DEADLINE 4	OH	JHar	JHar

DESIGNER  
**SWECO**

CONTRACTOR  
**GallifordTry**

CLIENT  
**highways  
england**

PROJECT TITLE  
**A47/A11 THICKTHORN JUNCTION**

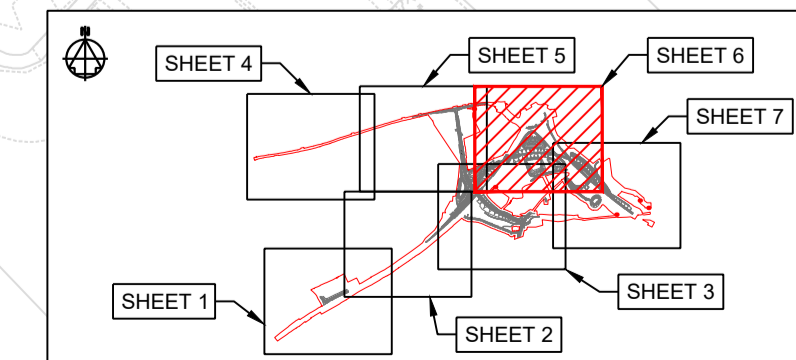
PROJECT STAGE  
**PCF STAGE 4**

DRAWING TITLE  
**DRAINAGE ENGINEERING  
REGULATIONS 5(2)(o) AND 5(2)(p)  
SHEET 6 OF 7**

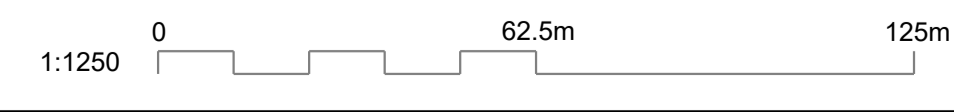
SUITABILITY  
**SUITABLE FOR STAGE APPROVAL**

SHEET SIZE	SCALE	STATUS	REVISION
A1	1:1250	S4	P05

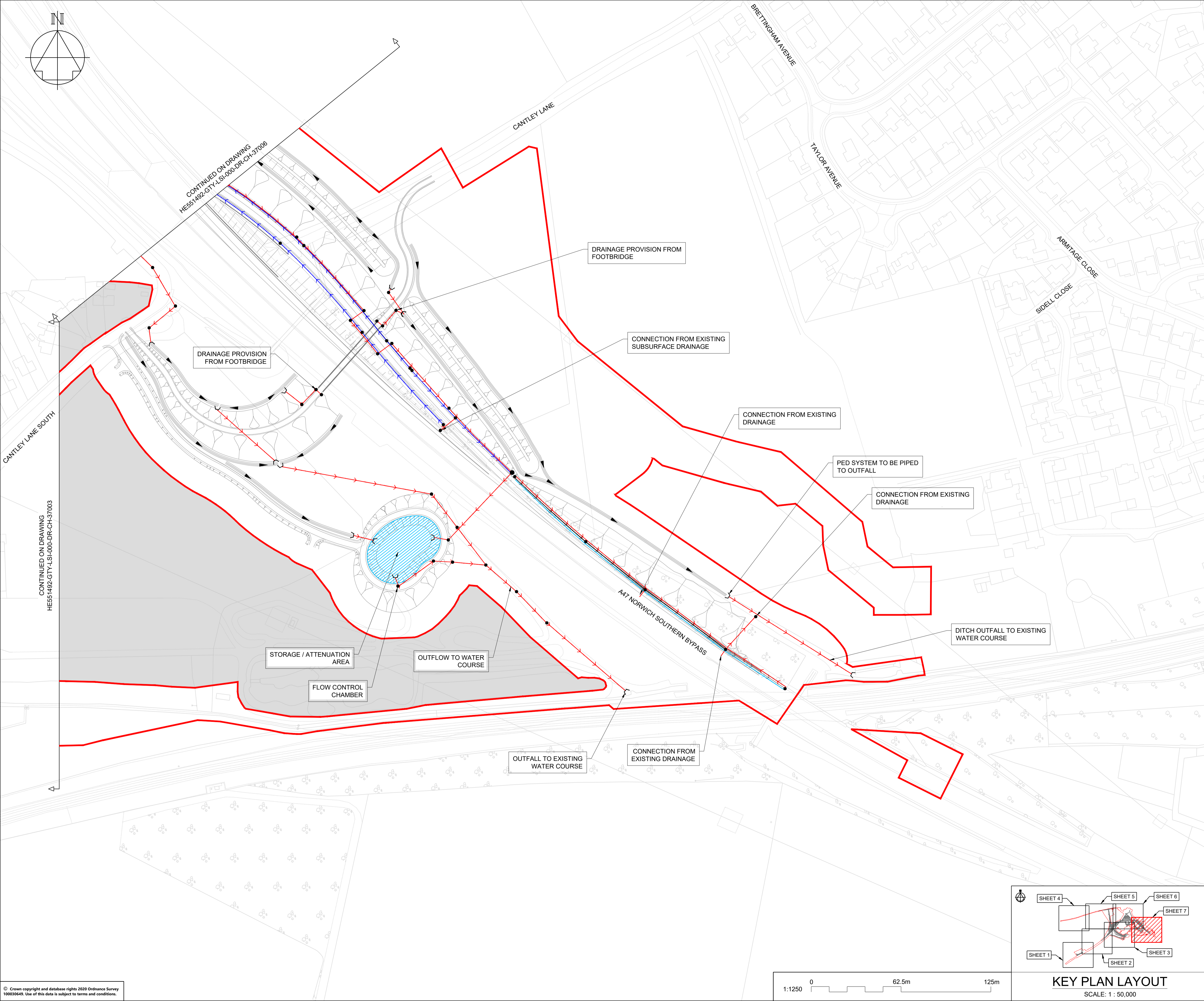
DRAWING NUMBER  
**HE551492-GTY-LSI-000-DR-CH-37006**



**KEY PLAN LAYOUT**  
SCALE: 1 : 50,000



This drawing should not be relied on or used in circumstances other than those for which it was originally prepared and for which Sweco UK Ltd was commissioned. Sweco UK Ltd accepts no responsibility for this drawing to any party other than the person by whom it was commissioned. This drawing has been prepared on behalf of Galliford Try by Sweco UK Ltd for the titled project or named part thereof and should not be relied upon or used for any other project without an independent check being carried out as to its suitability and prior written authority of Galliford Try being obtained. Sweco UK Ltd accepts no responsibility or liability for the consequences of this drawing being used for a purpose other than the purposes for which it was commissioned. Any person using or relying on this drawing for such other purpose agrees, and will by such use or reliance be taken to confirm his/her agreement, to indemnify Sweco UK Ltd for all loss or damage resulting therefrom.



**NOTES**

Purpose of use  
**FOR DCO SUBMISSION**

Development Consent Order Number / Document  
**TR010037/APP/2.8(H)**

1. ALL DIMENSIONS ARE IN METRES UNLESS STATED OTHERWISE.

**KEY TO SYMBOLS**

- ORDER LIMITS
- AREA NOT INCLUDED IN THE ORDER LIMITS
- SCHEME DESIGN
- FILTER DRAIN
- CARRIER DRAIN
- NARROW FILTER DRAIN / FIN DRAIN
- SURFACE WATER CHANNEL
- COMBINED KERB DRAINAGE
- LINEAR DRAINAGE SYSTEM
- RISING MAIN
- PRE-EARTHWORKS DRAINAGE DITCH
- CATCHPIT / MANHOLE
- GULLY & CONNECTOR
- ⌋ PROPOSED HEADWALL
- BYPASS INTERCEPTORS
- PUMP SHAFT
- CULVERT / PIPE CROSSING
- ATTENUATION STORAGE TANK / AREA

REV	DATE	REVISION NOTE	ORG	CHKD	APPD
P01	10/11/20	FOR INFORMATION	AKno	JHar	JHar
P02	10/12/20	DESIGN UPDATE	DPil	JHar	JHar
P03	15/03/21	DCO SUBMISSION	ACus	JHar	BWil
P04	30/03/21	DCO SUBMISSION	AKno	JHar	BWil
C01	30/03/21	DCO SUBMISSION	AKno	JHar	BWil
P05	06/12/21	DEADLINE 4	OH	JHar	JHar

DESIGNER  
**SWECO**

CONTRACTOR  
**GallifordTry**

CLIENT  
**highways england**

PROJECT TITLE  
**A47/A11 THICKTHORN JUNCTION**

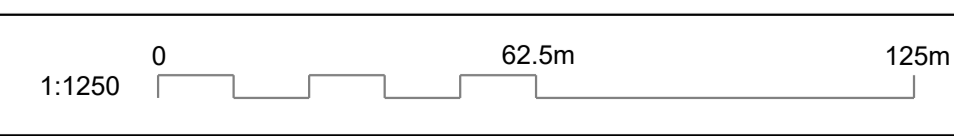
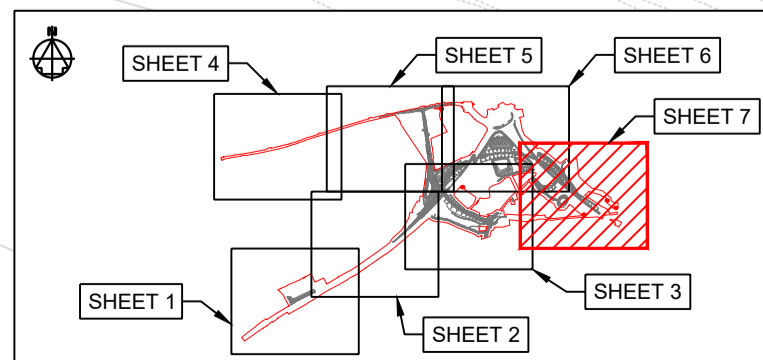
PROJECT STAGE  
**PCF STAGE 4**

DRAWING TITLE  
**DRAINAGE ENGINEERING DRAWINGS REGULATIONS 5(2)(o) AND 5(2)(p) SHEET 7 OF 7**

SUITABILITY  
**SUITABLE FOR STAGE APPROVAL**

SHEET SIZE	SCALE	STATUS	REVISION
A1	1:1250	S4	P05

DRAWING NUMBER  
**HE551492-GTY-LSI-000-DR-CH-37007**



© Crown copyright and database rights 2020 Ordnance Survey 100030440. Use of this data is subject to terms and conditions.